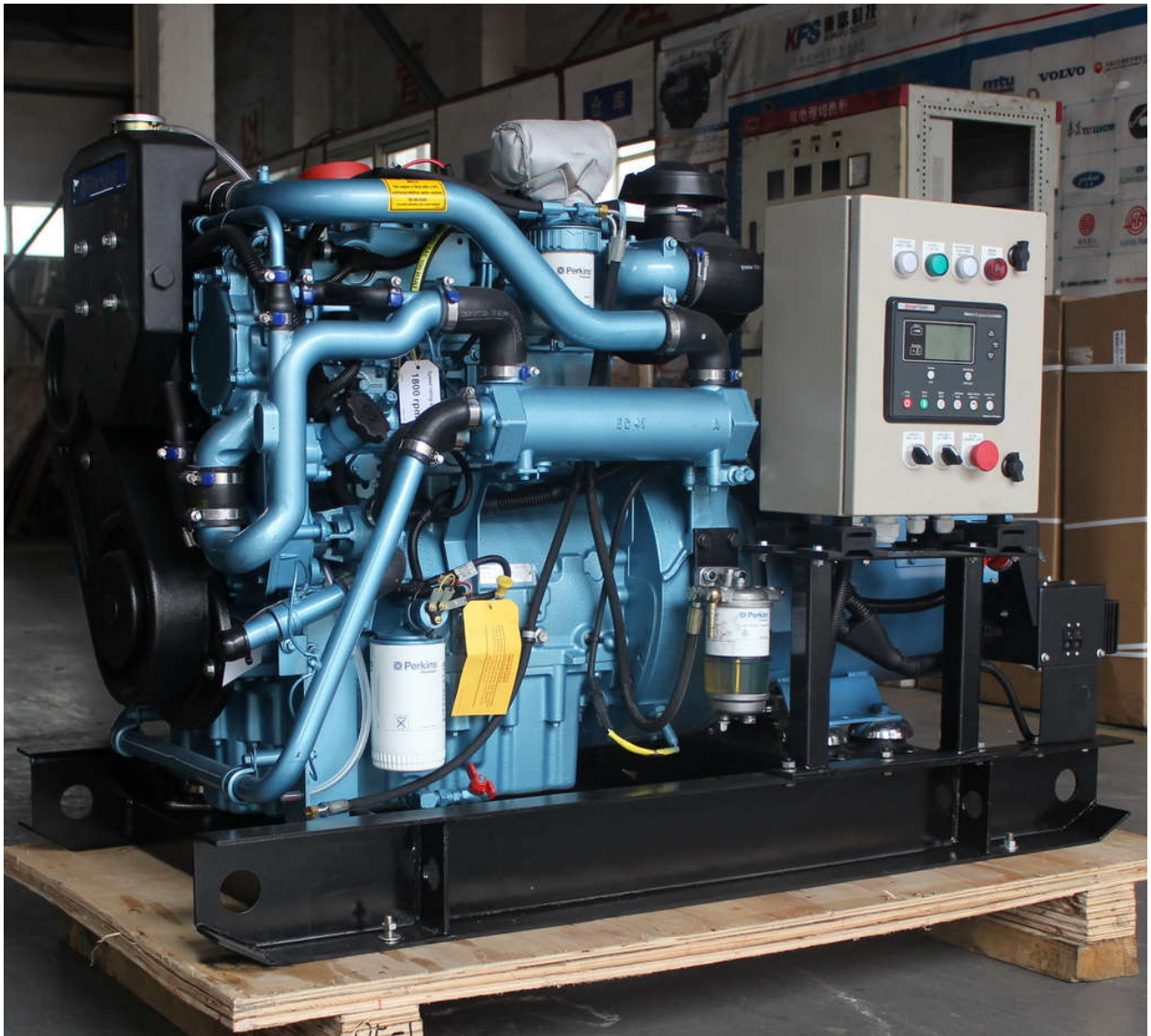

PERKINS MARINE GENERATOR SET

**Perkins Marine Genset 13.5kVA
50Hz 1500rpm 230Volts 1Phase**
professional diesel generator set
manufacturer with Power solutions to deliver
flexibility, reliability and cost-effectiveness.



Perkins 4.4 Marine Genset For reference only.
Image shown may not reflect actual package.

MARINE GENSET 13.5kW 13.5kVA

50Hz 1500 rpm 230 Volts 1 phase

| General Features | Standards & Conditions |
|---|---|
| <ul style="list-style-type: none">●Perkins Marine engine●Stamford Marine Alternator●LCD control panel●Speed governor: Electronic●Excitation: Self excited●A.V.R.●Voltage adjust knob●Vibration isolators between base and engine-generator●Dry air filter●DC12V electric starter●Operation Manual & Instruments●Marine Type engine & alternator●Certificates <p>Shop test</p> <ul style="list-style-type: none">●Refer to CCS test program for shop test●Starting ability test●Warning & Shutdown protection test●Voltage deviation and speed variation at 0%, 25%, 50%, 100% and 110% load <p>Documents</p> <ul style="list-style-type: none">●Supplier provides 1 set approval drawings (Chinese & English) within 10 working days after contract signature. <p>Each set consists of</p> <ol style="list-style-type: none">a. Genset outline drawingb. Electrical schematic diagram <ul style="list-style-type: none">●Packing list of Genset●Operation manual of Genset●Maintenance & operation manual of engine●Instruction of the AC alternator | <p>Design Standards</p> <p>The design and production of genset are in conformity with:</p> <ul style="list-style-type: none">●ISO8528:2005●GB/T13032-2010●GB/T2820-2009●CCS regulation of Steel vessel classification assessment <p>Environmental Operating Conditions</p> <ul style="list-style-type: none">●Installation place: inboard (well ventilated)●Ambient temperature: 5℃ to 45℃●Sea water temperature: -1℃ to 32℃●Relative humidity: ≤ 60%●Altitude: ≤1000 m●List ≤ 15°●Trim ≤ 5°●Roll angle ≤ 22° 30′●Pitch angle ≤ 7° 30′●Genset could start successfully and work continuously with slight salt mist, mycete, oil mist or curdle mist around. <p>Warranty</p> <ul style="list-style-type: none">●Engine and alternator apply for global warranty and post-sale service their own●Warranty of genset: 12 months or 1000 working hours (effecting which comes first) under normal use●Genset should be operated & overhauled correctly according to manual & operation instructions. |

MARINE GENSET 13.5kW 13.5kVA

50Hz 1500 rpm 230 Volts 1 phase

TECHNICAL DATA Open type Generator Set - -1500 rpm/50 Hz/ 230 Volts

| | |
|--|---------------------------|
| Genset Model | SDMP13.5SE |
| Generator Set Performance | |
| Genset Power rating @ 1.0 pf (PRP) | 13.5kW 13.5kVA |
| Overload capability (ESP) | 14.8kW 14.8kVA |
| Starter | Electric motor |
| Voltage Regulation Performance | |
| Voltage range adjustable at no load | 90%-110% Un |
| Voltage regulation | ≤ +/- 1% (steady state) |
| Transient Voltage Warp (100% load off) | ≤ + 20% |
| Transient Voltage Warp (100% load on) | ≤ - 15% |
| Recovery Time | ≤ 1.5s |
| Frequency Regulation Performance | |
| Frequency Deviation | ≤ +/- 0.5% (steady state) |
| Transient Frequency Warp (100% load off) | ≤ + 12% |
| Transient Frequency Warp (100% load on) | ≤ - 10% |
| Recovery Time | ≤ 5s |
| Emissions | European standard |
| Society of Classification | N/A |

● Prime Power (PRP): Prime power is available for an unlimited number of annual hours in variable load application, in accordance with GB/T2820-2009 (equivalent to ISO8528) ; A 10% overload capability is available for a period of 1 hour within a 12-hour period of operation.

● Standby Power Rating (ESP): The standby power rating is applicable for supplying emergency power for the duration of a utility power interruption. No overload, utility parallel or negotiated outage operation capability is available at this rating.

MARINE GENSET 13.5kW 13.5kVA

50Hz 1500 rpm 230 Volts 1 phase

SPECIFICATION

| | |
|--|---|
| Genset | SDMP13.5SE |
| Perkins Marine Engine | |
| Model | 422GM |
| Manufacturer | Perkins Engine Company Limited (Made in UK) |
| Rated power | 18.4kW |
| Type | Inline 4, 4 cycle, direct injection |
| Bore*Stroke | 84*100mm |
| Compression Ratio | 23.3:1 |
| Displacement | 2.2L |
| Aspiration | Naturally aspirated |
| Cooling | Heat exchanger |
| Governor | Electronic |
| Starter | DC12V electric starter |
| Total lubricating capacity | 10.6 litres |
| Total coolant capacity | 10 litres |
| Fuel specification | Light diesel |
| Lubricating oil specification | CF40 or better |
| Stamford Marine Alternator | |
| Model | PM144E |
| Manufacturer | Cummins Generators Technology(China) Co., Ltd. |
| Rated capacity | 13.5kVA |
| Type | Brushless, AVR-excited, AVR, 2/3 pitch |
| Construction | Single bearing, close coupled |
| Connecting | 1 Phase 2 Wires |
| IP rating | IP23 |
| Insulation / Temp. Rise | Class H / H |
| THD, TIF, THF | THD≤5%, TIF≤50, THF≤2% |
| Voltage Regulation | Less than +/- 1% (steady state) Less than +/- 2.5% (no load to full load) |
| LCD Control Panel (Marine type) | |
| Instruction | Start button, Stop button, Reset button, Test button, Emergency stop etc. |
| Indication | Tachometer Lube Oil pressure, Coolant temperature Indication according to Engine Full electronic control system |
| Alarm & Shutdown Protection | Overspeed, Low Lube oil pressure High Coolant temperature |

MARINE GENSET 13.5kW 13.5kVA

50Hz 1500 rpm 230 Volts 1 phase

Notice: Of optional, please indicate me before place PO. The cost will be on your charge.

FACTORY INSTALLED STANDARD & OPTIONAL EQUIPMENT

| System | Standard | Optional |
|--------------------------|--|-----------------|
| Air Inlet | Air cleaner Closed engine breather system | |
| Cooling | Heat exchanger Sea water pump Fresh water pump | |
| Exhaust | Exhaust manifold Water cooled exhaust outlet | |
| Fuel | Spin-on fuel oil filter and separator Rotary fuel injection pump Electronic governor | |
| Lube | Lubricating oil filter Oil dipstick Oil cooler Oil pump | |
| Governor | Electronic | |
| Generator | Self excited, Brushless Class H insulation Class H temperature rise Class IP23 protection Auto Voltage Regulator (AVR) | |
| Control Panels | LCD control panel Remote controller with 20m cables | |
| Mounting | Wide base Rubber vibration isolators | |
| Starting/Charging | Charging alternator 12 Volt starting motor | |
| General | Paint –blue in comply with engine Base in Black | |

MARINE GENSET 13.5kW 13.5kVA

50Hz 1500 rpm 230 Volts 1 phase

DIMENSIONS

| | |
|---|------------|
| Package dimension: Perkins & Stamford Package | |
| Model | SDMP13.5SE |
| Length (mm) | 1300 |
| Width (mm) | 720 |
| Height (mm) | 860 |
| Weight (kgs) | 480 |

Note: Do not use for installation design.

See general dimension drawings of approval for detail.